

# Flood risk and greening the grey

Jessica Bastock

Phoebe Shaw Stewart

Georgia Turner



**h&f**  
hammersmith & fulham

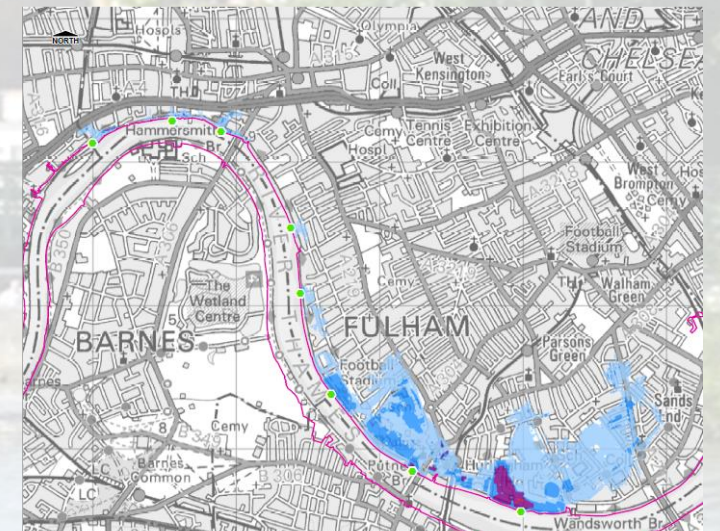
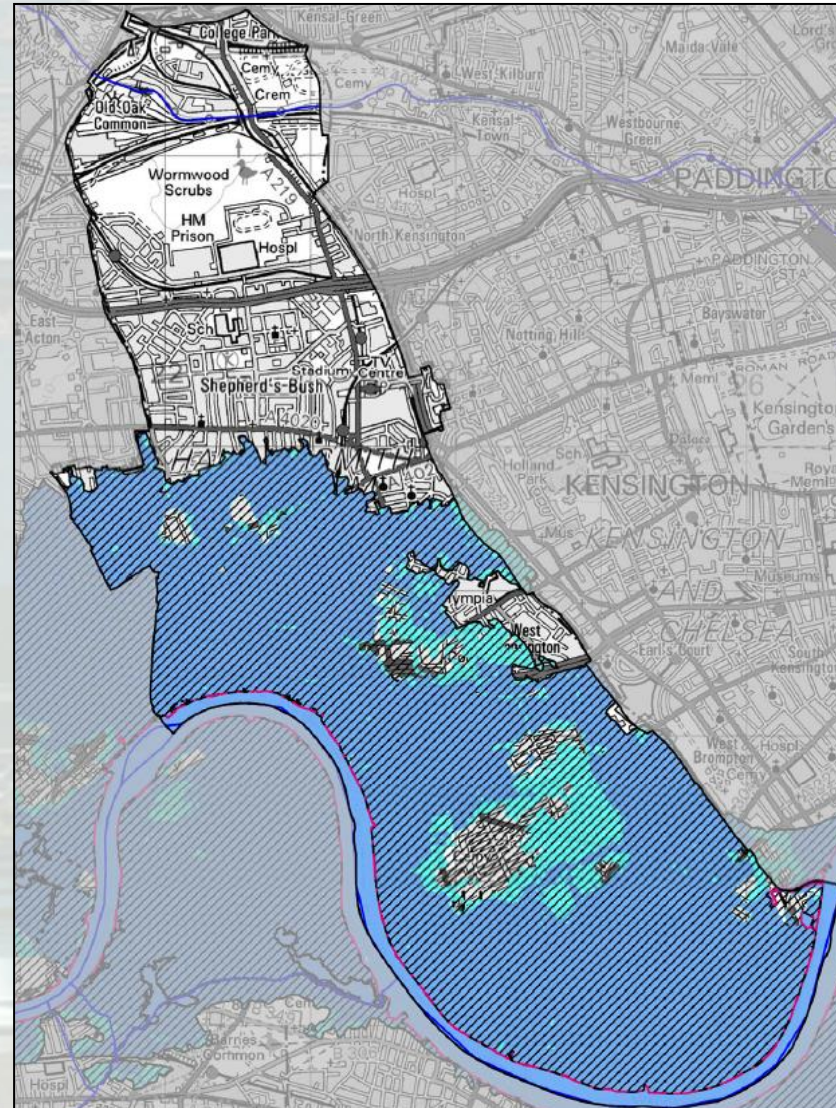


# Who manages flood risk

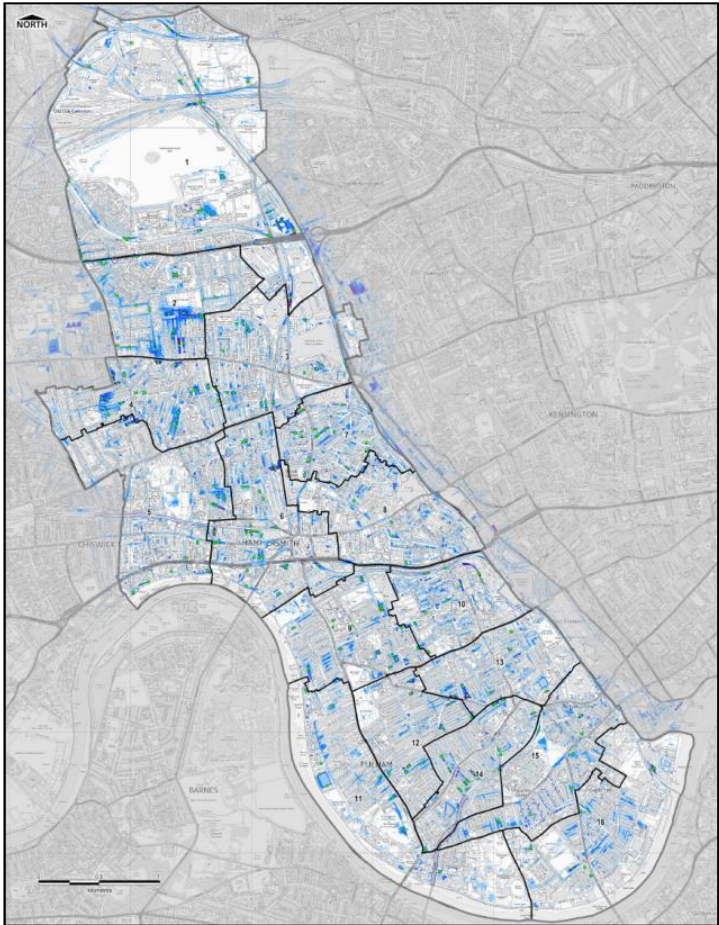
- **Hammersmith and Fulham Council** are the Lead Local Flood Authority and have a duty
  - manage surface water, groundwater and ordinary watercourses
- **The Environment Agency** manages major watercourses, such as The River Thames
- **Water Companies** manage the sewer network



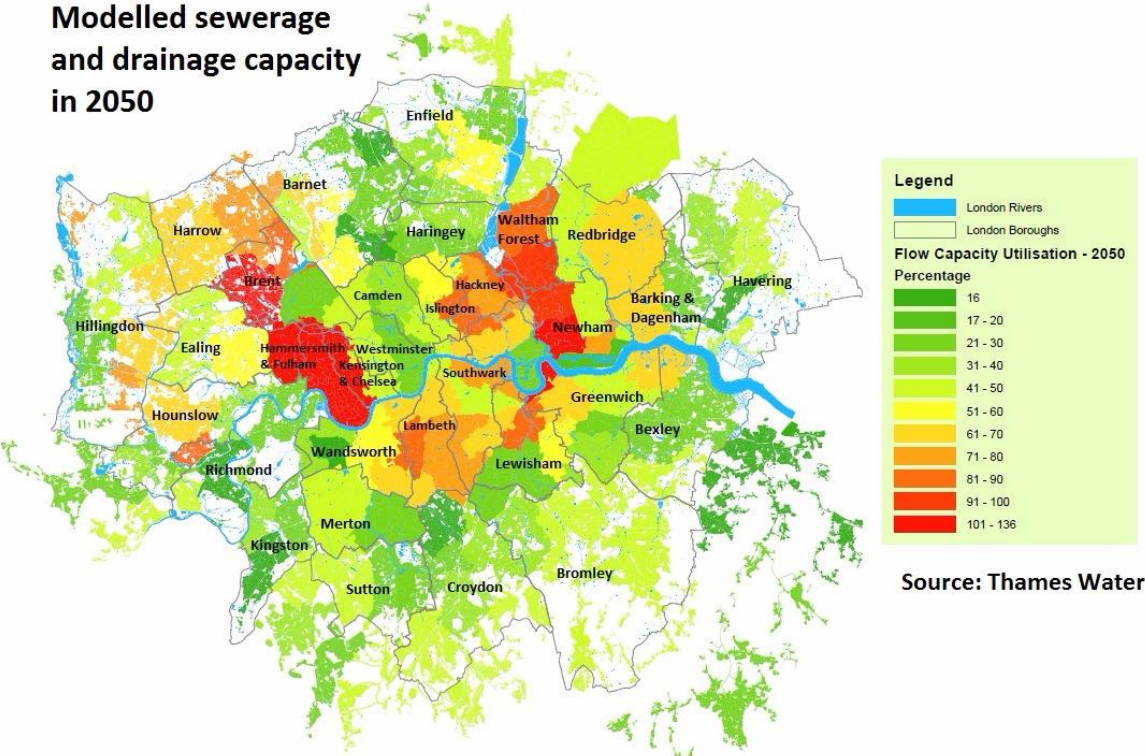
# Fluvial/Tidal Flood Risk



# Surface Water Flood Risk



Modelled sewerage and drainage capacity in 2050



Source: Thames Water

# What are we doing

- Working with other LBHF departments (joint Climate Adaptation Steering Group)
- Working with other Risk Management Authorities (other boroughs, EA, TW)
- Ensuring new developments adhere to Local Plan policy on flood risk and drainage
- Enhance highway gully cleansing programme
- Community projects and flood action group
- Information – Rainwater guide
- SuDS projects



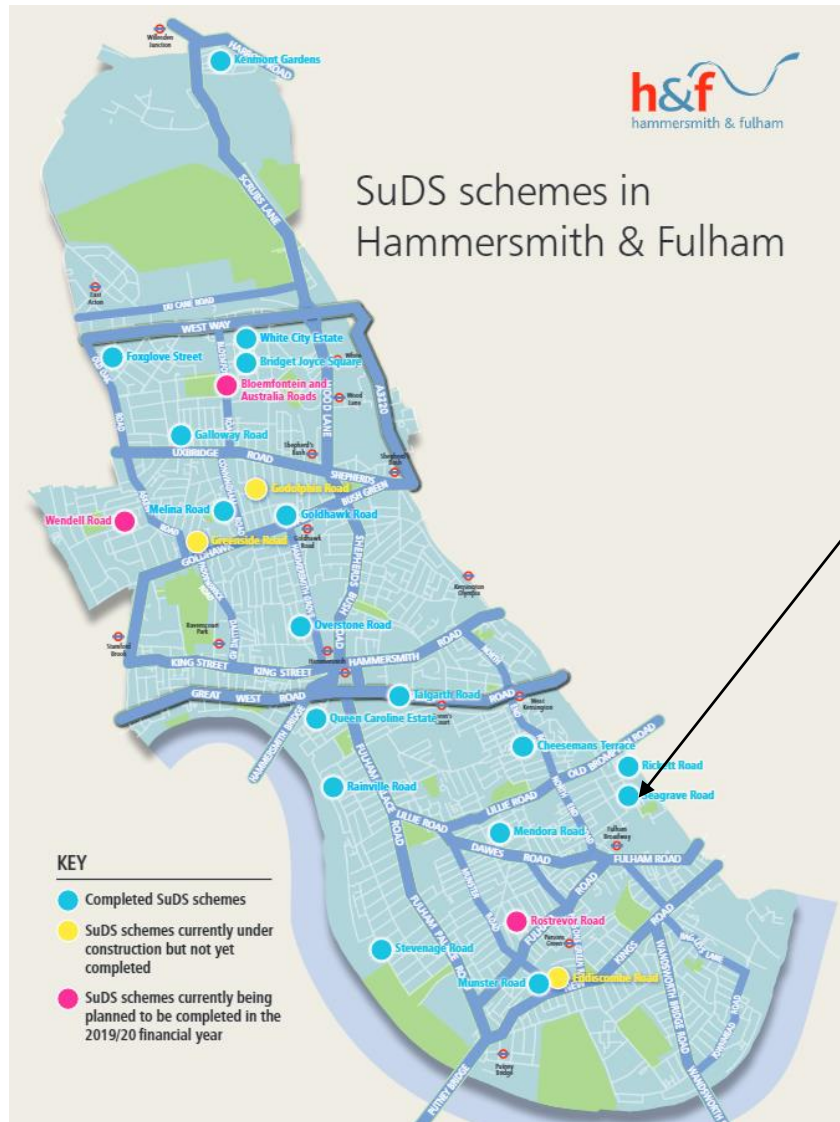
# Flood risk and action

- Action plan comprises actions from the Surface Water Management Plan and the Local Flood Risk Management Strategy.
- Key themes for actions include statutory duties, collaboration, communication, maintenance and emergency planning.

Theme	ID	Action			Priority Ranking	Timing			Action Type	Responsibility			Other Stakeholders	Review	
		What?	How?	Where?		Timeframe	Start Date	Approx. Duration		Lead Organisation	LLFA Dept.	Primary Support		Frequency	Next Review Date
LLFA duty	LBHF1	Implement and populate a standardised Asset Register for the LBHF, prioritising surface water assets in those areas that are known to regularly flood	Implement a standardised asset register structure as per the suggested template provided by Defra. Educate departments involved in filling in the register, need to ensure everyone involved understands the register, its purpose and the methodology. Populate Asset Register with Council-owned Surface Water / Drainage Assets.	Borough Wide	High	Short	Highways	6 months	Flood and Water Management Act / Flood Risk Regulations	LBHF	Spatial Planning	GIS Team & Transport / Highways Team	EA, TfL, Network Rail, TWUL, London Underground, Energy Operators + others as appropriate	annual	Sep-24
LLFA duty	LBHF2	Revise & improve Asset Register	Revise the Asset Register as required to incorporate more information, i.e. survey details and develop a GIS/web based-compatible database to create a spatial representation of the surface water assets.	Borough Wide	Low	Medium	Highways	Ongoing	Flood and Water Management Act / Flood Risk Regulations	LBHF	Spatial Planning	GIS Team & Transport / Highways Team		annual	Mar-25
LLFA duty	LBHF3	Implement a standardised Flood Incident Log to record and investigate future flooding incidents within the LBHF	Implement a standardised flood incident log to record flood events. Educate departments involved in filling in the spreadsheet to ensure everyone involved understands the log and the methodology. It is recommended that the source of flooding be recorded, e.g. gully surcharging, to inform maintenance priorities.	Borough Wide	High	Short	Emergency Planning	6 months to implement the log - this could be done immediately. The training of staff may take more time to formulate and action but it	Flood and Water Management Act / Flood Risk Regulations	LBHF	Spatial Planning			ongoing	

# Guidance

- SuDS map of borough
- Currently updating website and make interactive



**Seagrave Road**

**Location**

**Before**

**After**

**The benefits**

- Blue circle with water drop
- Green circle with leaf
- Pink circle with flower
- Light blue circle with lungs

**Features**

- Blue circle with water droplets
- Green circle with tree

- Link to current guides such as the H&F living with rainwater guide



# Greening the Grey





# What?

- Reduce and adapt grey infrastructure
  - Rail & roads
  - Pipes and cables
- Increase green infrastructure
  - Parks, green spaces & gardens
  - Woodlands, rivers & wetlands
  - Street trees & planters
  - Green roofs & walls



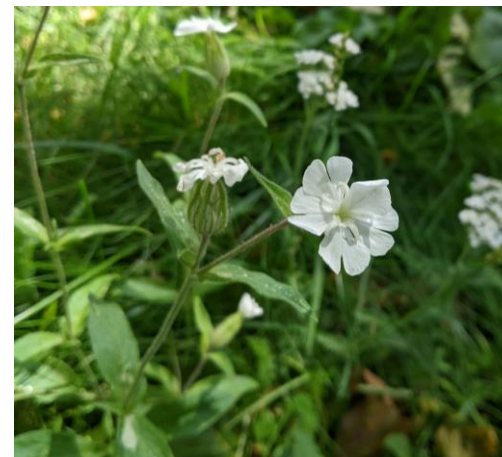
# Why?

- More than just improving the look of places
- Green infrastructure can clean air, reduce flood risk and create cool spaces
- Create a resilient city that can accommodate a growing population
- Adapt to effects of changing climate
- Creative solutions required as land pressure increases



# Green Verges

- Multiple examples throughout the borough including New Kings Road and Bentworth Road
- Contributes to creating ecological corridors and forms a green barrier
- Permeable surface



# SuDS

- Opportunities throughout the borough
- Numerous successful examples of completed projects
  - Godolphin Road
  - Australia Road
  - Starch Green
- Provide multiple benefits incl tackling surface water flooding, improving biodiversity and engaging the community



# SuDS features

- Permeable and porous surfaces
- Swales/ponds
- Rainwater harvesting
- Green roofs
- Engineered tree pits
- Raingardens



# Trees and tree pits

- Tree strategy in final stages
- Increase canopy cover from 14% to 16.5% by 2030 (23% by 2050)
- >27,000 trees in parks, housing, cemeteries, schools and highways
- >45,000 privately owned trees
- Multiple benefits



# Green Roofs

- Opportunity to increase green cover, improve biodiversity and adapt to climate change
- Can be rolled out on private and council buildings
- Can be combined with PV panels to create biosolar roofs



# Resident involvement

- >40% of private gardens are paved over
- Opportunities on balconies and small spaces
- Involving residents also benefits wellbeing
- Free tree/bulb/seed giveaways
- Events and groups





# Greening the Grey projects in Public Realm



# 2024 / 2025 Projects

- Eelbrook Common
- Westville Road
- King Street
- Addison Gardens
- Edith Road
- New Kings Road
- Marinefield Road
- Grove Mews
- Blythe Road

# Eelbrook Common

- Grant from Mayor of London
- Supplemented by S106 and Green Investment Fund
- Removed concrete and hardstanding from ~1700sqm area
- Community planting day 17 April
- Improve look and feel of area
- Benefits biodiversity
- Permeable surface



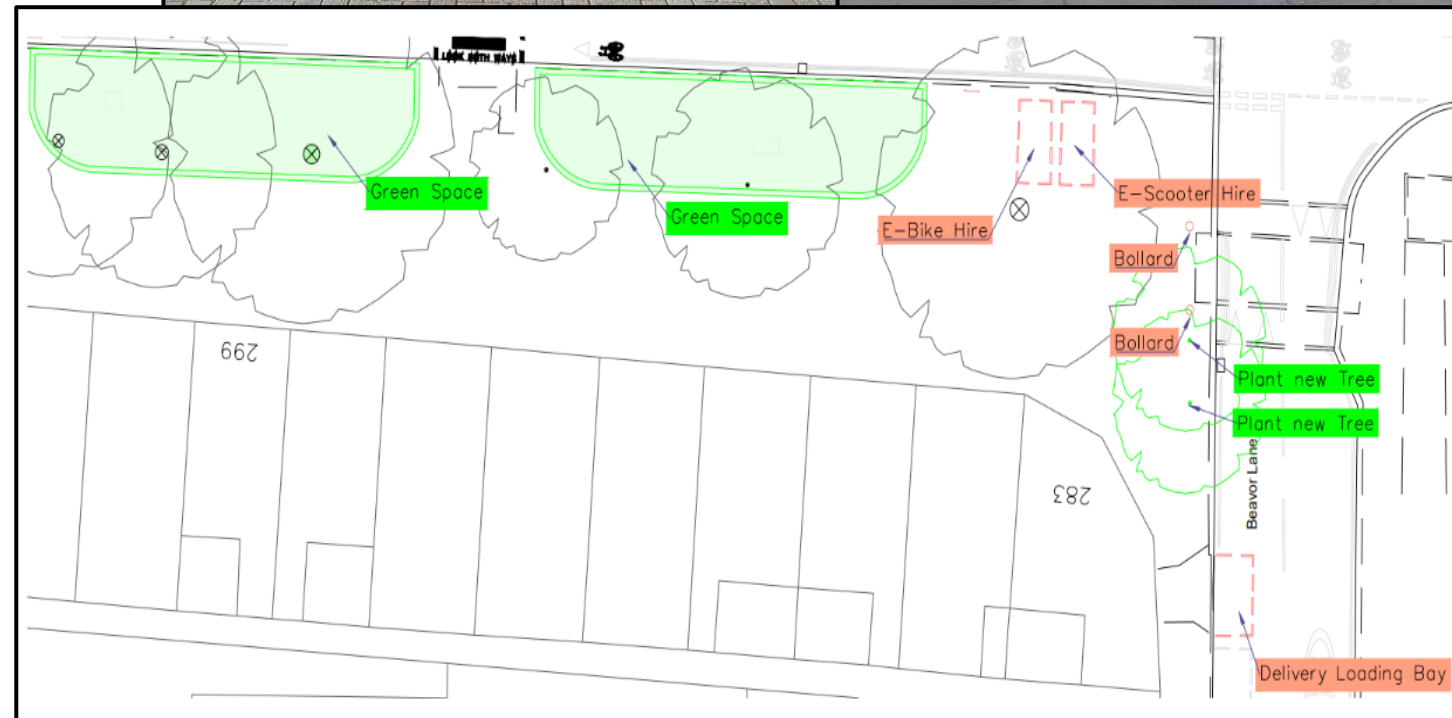
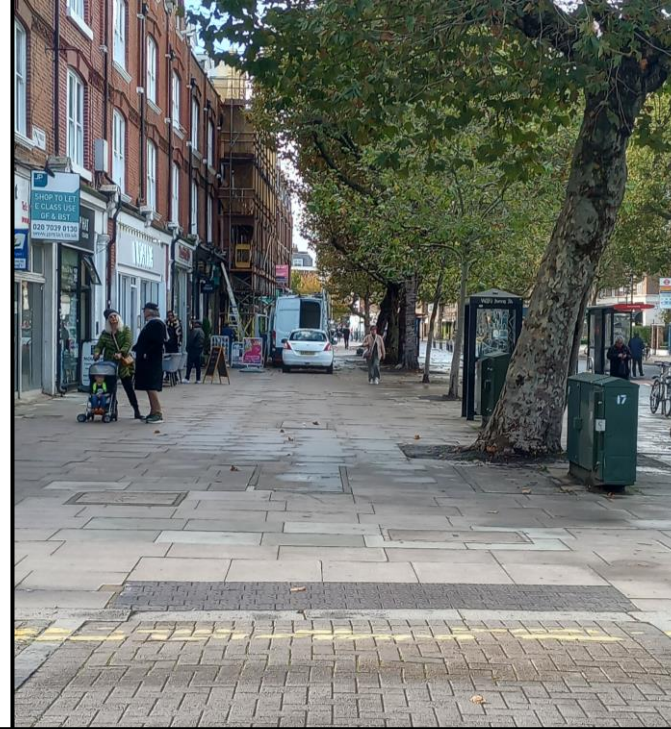
# Westville Road

- SuDS
- Green Investment Fund
- Co-designing with adjacent primary school
- Removing hardstanding material in pedestrianised space
- Providing a green community space
- Working with the Police by tackling anti-social behaviour



# King Street

- SuDS
- S106 Funding and UK Shared Prosperity Funding
- Depave outside the parade of shops
- Providing the space for business deliveries
- Improving pedestrian safety
- Micro mobility hub



# Edith Road

- SuDS
- Green Investment Fund
- Utilising hatching space along the street to create raingardens
- Influencing driving behaviour
- Improve look and feel of the road
- Benefits biodiversity



# Blythe Road

- Trees & SuDS
- Green Investment Fund
- Phase 1 of works
- Removing hardstanding material
- Increasing the number of trees by putting them in the road as buildouts



# Further work

- SuDS opportunity mapping
- Applying for external funding for new projects
- Working with Planned Maintenance team and our Capital Projects team to maximise greening in all schemes

